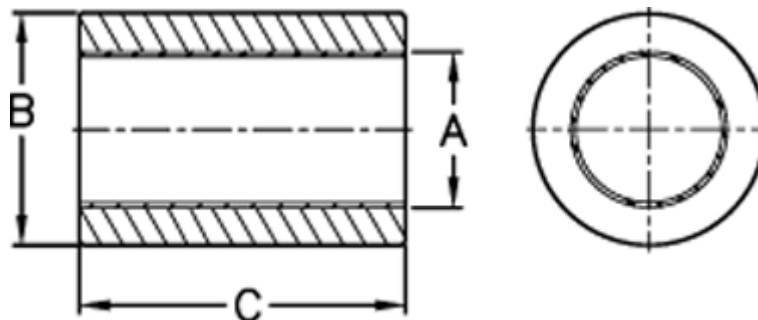


Article number: 50400610010

Description: Sleeve bearing PSM 0610-10

Measures



A max	= 6.058	Bush weight kg = 0.00140
A min	= 6.028	Bush $\bar{\quad}$ external = 10
B max	= 10.038	Bush $\bar{\quad}$ internal = 6
B min	= 10.023	C max = 10
Bore "push-fit" max	= 10.015	C min = 9.75
Bore "push-fit" min	= 10.000	Shaft $\bar{\quad}$ = 10
Bore housing coarse fit max	= 10.063	Static load (kg) = 126
Bore housing coarse fit min	= 10.038	